

# Activity 12: Artefact Study



Artefact Group 1



Artefact Group 2



Artefact 3



Artefact 4



Artefact Group 5



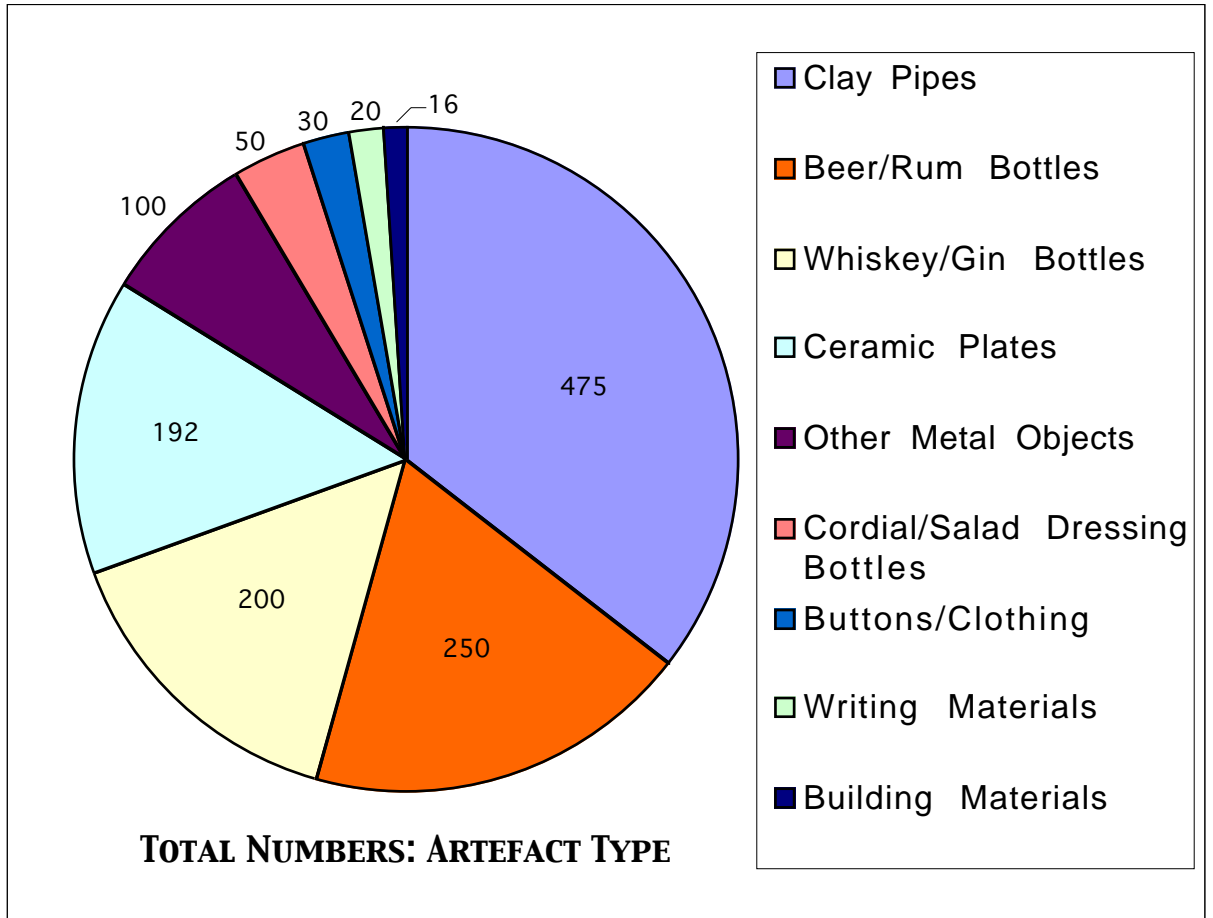
Artefact 6



Artefact Group 7

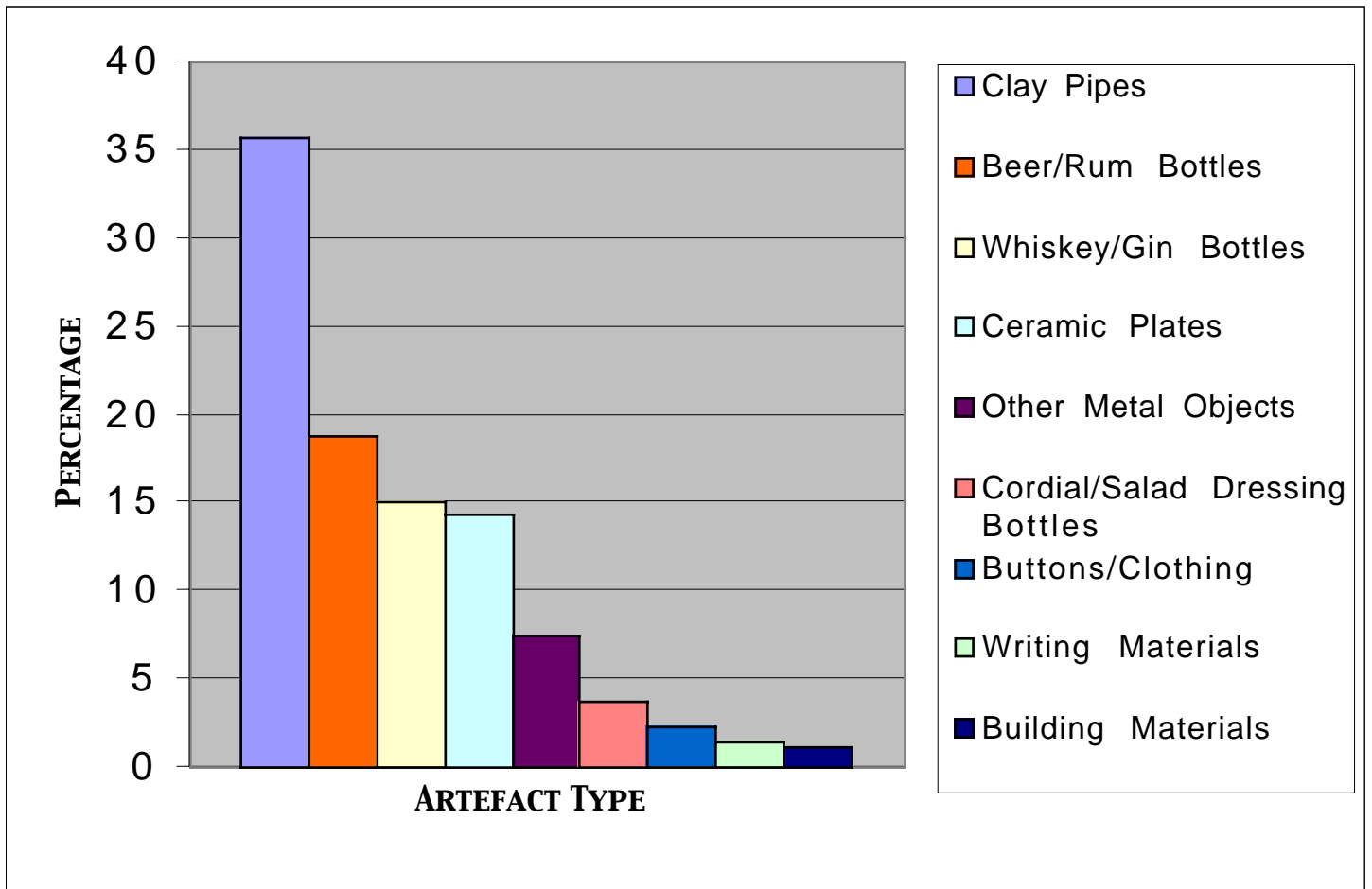


# Activity 13: Solve a Puzzle



Pie Graph illustrating the total amount of each artefact type found beneath the floor of the 1850s Barracks.

Bar Graph illustrating the percentage of each artefact type found beneath the floor of the 1850s Barracks.



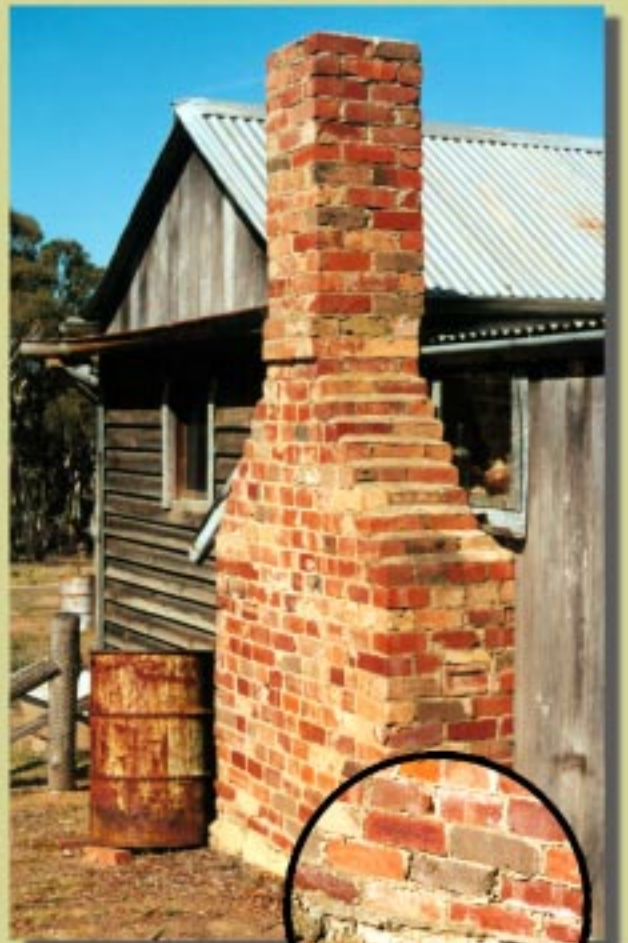
# Activity 14: Predict the Future



TENT: SUPPORTED BY END POLES



SLAB HUT: WOOD WALLS AND SUPPORTS



BRICK WALL WITH STONE FOUNDATIONS



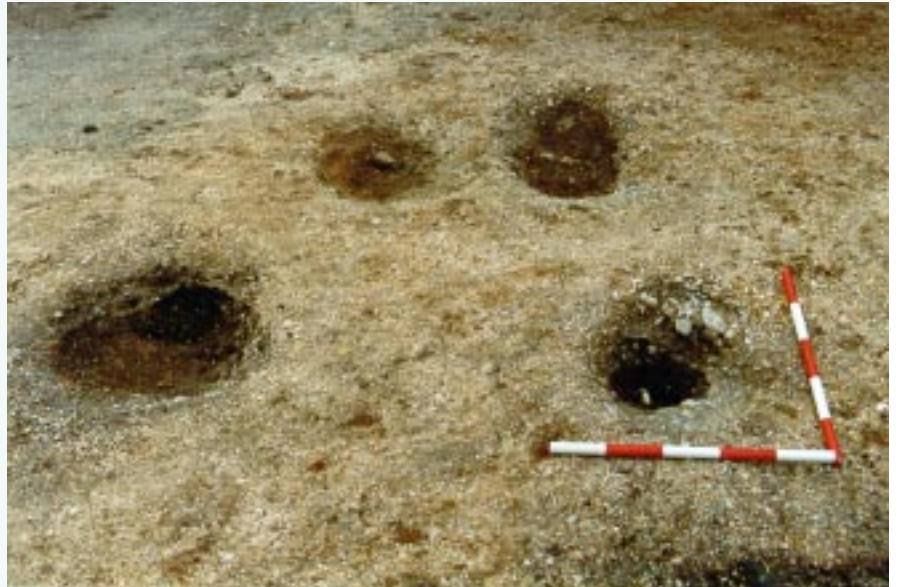
# Activity 15: Interpret the Past



**Photo 1.** Stone filled ditch.  
Scale is 50 cm long.



**Photo 2.** Square post-hole. Each scale is 50 cm long.



**Photo 3.** Post-holes dug into the gravel surface of the parade-ground.  
Each scale is 50 cm long.



**Photo 5.** Edge of the 1850s Soldiers' Barracks. To the left is the yellow clay of the outside parade-ground and to the right is the dark deposits found under the barrack's floor. Scale is 20 cm long.



**Photo 4.** One of the wooden floor supports for the Soldiers' Barracks (1850s).  
Scale is 10 cm long.